



ENABLING FIELDBUS WITH AMS™ SUITE: INTELLIGENT DEVICE MANAGER'S HSE INTERFACE

AMS DEVICE MANAGER WITH THE ROSEMOUNT® 3420 YIELDS BENEFITS

It is now possible to realize the benefits of employing FOUNDATION™ fieldbus in your plant or mill even if your current control system does not support fieldbus. By using the HSE interface to AMS Device Manager with the Rosemount 3420 Fieldbus Interface Module, you can configure and diagnose fieldbus devices along with other instrument and valve assets from a single application. Enjoy the benefits of fieldbus, including reduced installation and operating costs, fieldbus networking, access to advanced diagnostics for improved asset management and control-in-the-field capabilities for improved performance.

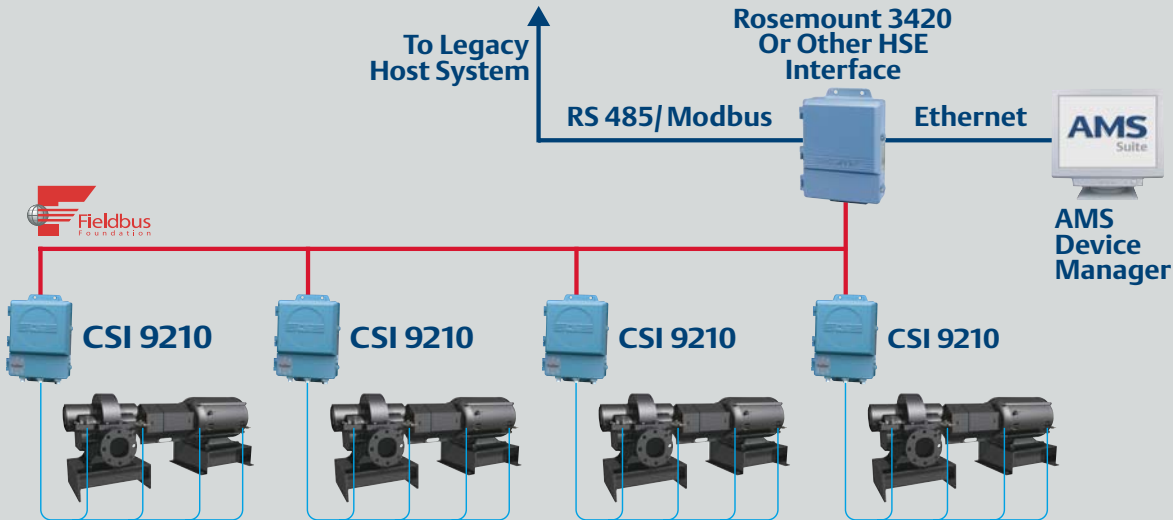
In addition, the powerful PlantWeb® Alert capabilities employed in Emerson fieldbus devices are now available to users of AMS Device Manager. By notifying plant personnel of problems with critical plant assets, costly downtime can be prevented.

FIELDBUS CONNECTIVITY

- Easily integrate fieldbus devices with other instrumentation in a single application for a comprehensive view of plant assets.
- Interfaces to legacy control systems using 3420.
- Extends connectivity to fieldbus devices on DeltaV™ and Ovation® systems from Emerson.
- Provides support for all FOUNDATION fieldbus devices.
- Prevents costly downtime through visibility to critical plant conditions. PlantWeb Alerts categorize warnings and give recommendations of necessary actions to empower fast action.
- Delivers actionable information based on rotating equipment health using CSI 9210 Machinery Health™ Transmitter.



AMS Suite: Intelligent Device Manager powers PlantWeb through predictive and proactive maintenance of intelligent field devices to improve availability and performance.



It is now possible to monitor the health of motor-pump machine trains throughout a plant or mill.

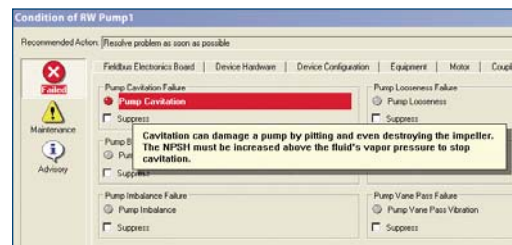
REAL-TIME MACHINERY HEALTH DIAGNOSTICS WITH AMS SUITE: INTELLIGENT DEVICE MANAGER AND CSI 9210

AMS DEVICE MANAGER PROVIDES A WINDOW TO THE HEALTH OF ESSENTIAL ROTATING MACHINERY

Using AMS Device Manager along with the CSI 9210 Machinery Health Transmitter, you can monitor the health of motor-pump machine trains. Predictive diagnostics deliver actionable information to operations and maintenance personnel that can help prevent unplanned shutdowns. The Rosemount 3420 Fieldbus Interface Module provides a convenient fieldbus connection to multiple CSI 9210 transmitters even if a fieldbus-enabled control system is not available.

PLANTWEB ALERTS PREVENT PRODUCTION UPSETS

PlantWeb Alerts provide the ability to quickly alert the right person to pending equipment conditions.



©2006, Emerson Process Management.

The contents of this publication are presented for informational purposes only, and while every effort has been made to ensure their accuracy, they are not to be construed as warranties or guarantees, express or implied, regarding the products or services described herein or their use or applicability. All sales are governed by our terms and conditions, which are available on request. We reserve the right to modify or improve the designs or specifications of our products at any time without notice.

All rights reserved. AMS, PlantWeb, Machinery Health, FOUNDATION fieldbus, DeltaV, Rosemount and Ovation are marks of one of the Emerson Process Management group of companies. The Emerson logo is a trademark and service mark of Emerson Electric Co. All other marks are the property of their respective owners.

10P60317001/D351374X012/printed in USA/8-2006

Emerson Process Management

12001 Technology Drive
Eden Prairie, MN 55344 USA
T 1(952)828-3206
F 1(952)828-3033

www.assetweb.com