

## Router DTM Interface

- Gain asset management functionality within an FDT frame application
- Experience consistent device displays through graphical EDDL interface

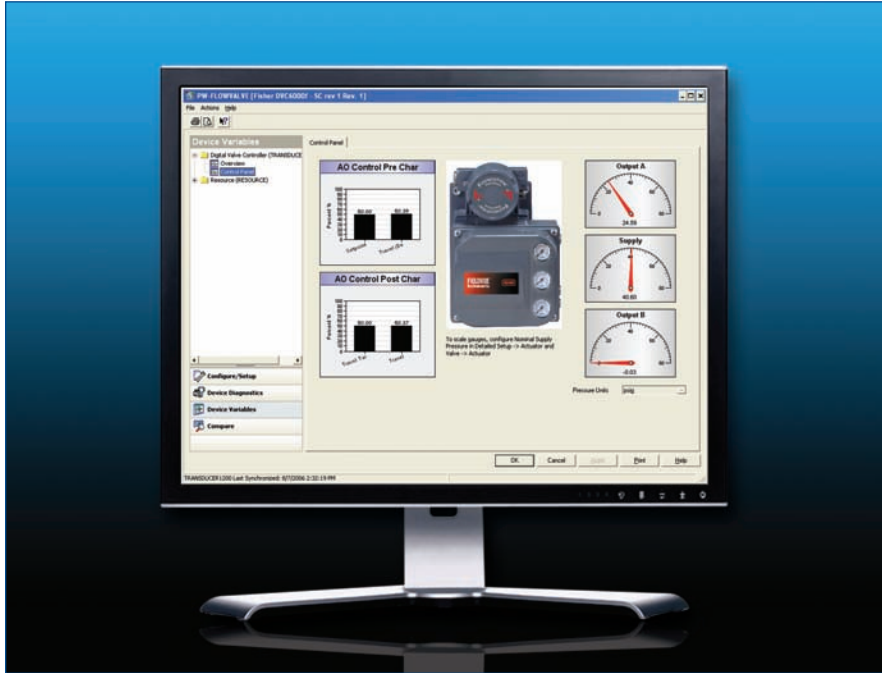


*AMS Device Manager reduces commissioning and maintenance expenses while improving plant availability.*

### Full Asset Management Capabilities

The Router DTM Interface provides a communications link between your FDT frame application and AMS Device Manager to provide device diagnostics. Use AMS Device Manager to configure, calibrate, diagnose, and document activities for your HART® and FOUNDATION™ fieldbus

devices in a single application. With the Router DTM Interface, you can utilize the asset management capabilities from AMS Device Manager to more effectively and efficiently manage your intelligent field devices.



Device diagnostics are presented graphically with charts, trends, and graphs using enhanced EDDL technology.

## Diagnostics with Advanced Functionality

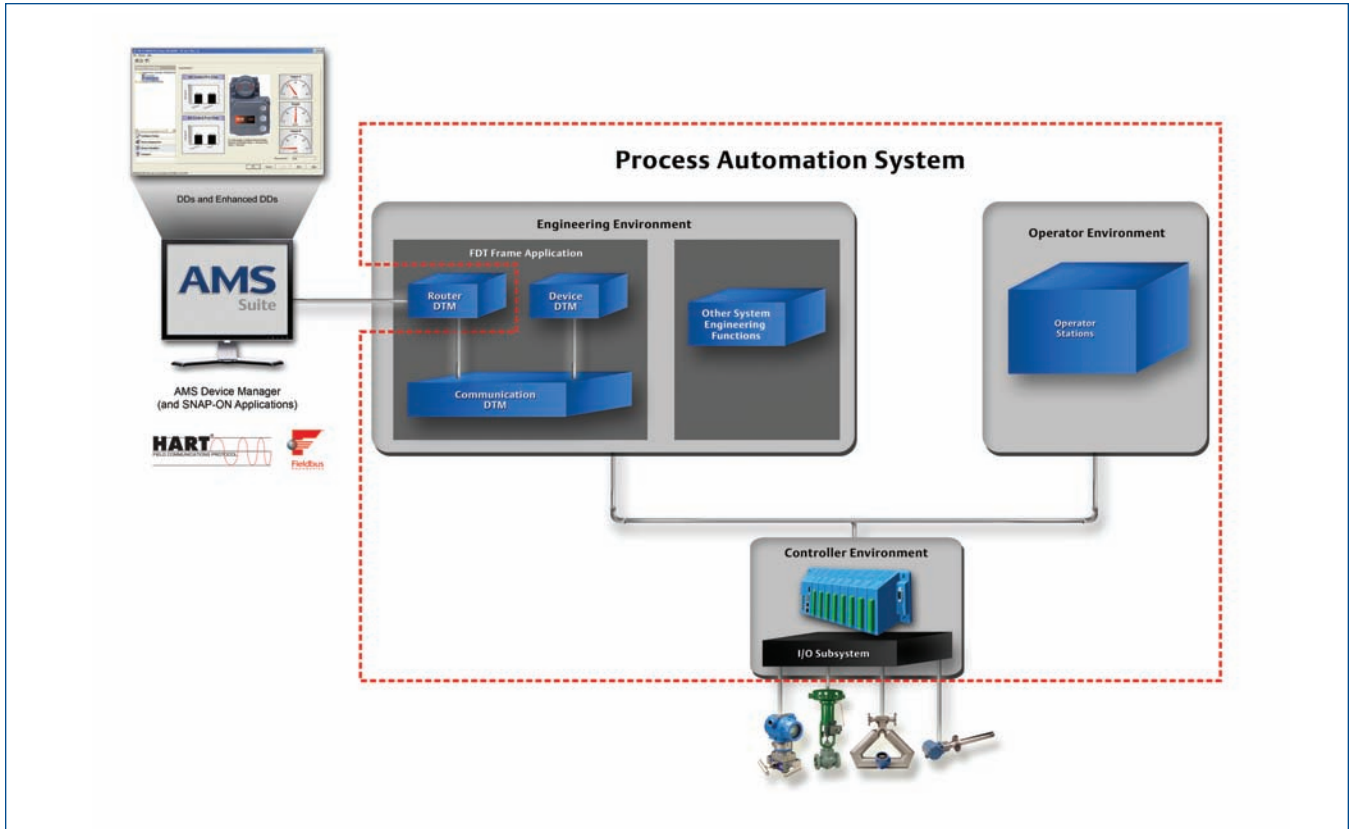
By connecting AMS Device Manager to your FDT frame application, you can quickly check the health of a connected device using diagnostic capabilities. The Audit Trail automatically documents device activities. AMS Device Manager allows you to expand the configuration capabilities in your FDT frame application. In addition to being able to change, store, compare, and transfer device configurations

without going into the field, you can also streamline calibration, diagnose and troubleshoot device issues, and document maintenance activities.

## Enhanced EDDL Technology

Asset health information, powered by enhanced EDDL, is displayed through a graphical interface to provide consistency in device displays between manufacturers. Now you can easily locate the information you need, regardless of the device.

Enhanced EDDL technology also presents graphical diagnostics, using graphs, charts, and calculations to assist in the configuration of devices, including complex instruments like digital valve controllers, radar level gauges, and multivariable meters. Graphical interfaces using enhanced EDDL provide compelling visualization to aid in troubleshooting and support decision-making.



The Router DTM Interface connects your FDT frame application to AMS Suite to provide status from smart field devices.

## SNAP-ON™ Applications Extend Diagnostic Reach

AMS Device Manager SNAP-ON applications provide enhanced information and diagnostic functionality for specific devices. You can connect AMS Device Manager and any SNAP-ON application to devices within your FDT frame application through the Router DTM Interface.

With the AMS ValveLink® SNAP-ON application, you can obtain device diagnostics for configuration, calibration, and

documentation of your Fisher® FIELDVUE® Digital Valve Controllers (DVC). Test your DVCs for air leakage, valve assembly friction and dead band, loose connections, supply pressure restriction, and valve assembly calibration. When a problem is identified, you can access a description, probable cause, and recommended action for resolution.

Save time by using the configuration and calibration capabilities of the AMS ValveLink

SNAP-ON application to perform these tasks online:

- Automatically calibrate travel
- Verify dynamic response to input changes
- Step-by-step instrument setup and calibration

The Setup Wizard helps you to simplify and speed up your commissioning activities. You can also generate reports to document your device maintenance activities.

## AMS Suite

AMS Device Manager is part of the AMS Suite, a family of software applications for predictive diagnostics and performance monitoring for all major production assets, including mechanical equipment, electrical systems, process equipment, instruments, and valves.

### AMS Suite: Asset Portal™

provides a consolidated view of summary of information from the AMS Suite applications through a secure web browser and individualized views of prioritized predictive diagnostics for operations, maintenance, and management teams.

Connect AMS Asset Portal to your enterprise asset management (EAM) system to automatically trigger maintenance work orders for your most critical plant assets.

## PlantWeb® Services

Use Emerson's PlantWeb Services for Asset Optimization to ensure you are effectively employing AMS Device Manager. Emerson's experts can help you use the diagnostics from your smart devices to full advantage. INSTALL, IMPLEMENT, and INCORPORATE your AMS Suite software with your EAM system to enable measure of improvement to your facility's bottom line.

For more information, contact your local Emerson Process Management sales representative.

### Emerson Process Management

#### Asset Optimization Division

12001 Technology Drive  
Eden Prairie, MN 55344 USA  
T 1(952) 828-3206  
F 1(952) 828-3033

©2008, Emerson Process Management.

The contents of this publication are presented for informational purposes only, and while every effort has been made to ensure their accuracy, they are not to be construed as warranties or guarantees, express or implied, regarding the products or services described herein or their use or applicability. All sales are governed by our terms and conditions, which are available on request. We reserve the right to modify or improve the designs or specifications of our products at any time without notice.

All rights reserved. PlantWeb, AMS, ValveLink, FIELDVUE, Fisher, and SNAP-ON are marks of one of the Emerson Process Management group of companies. The Emerson logo is a trademark and service mark of Emerson Electric Company. All other marks are the property of their respective owners.



AMS Suite: Intelligent Device Manager powers PlantWeb through predictive and proactive maintenance of intelligent field devices to improve availability and performance.