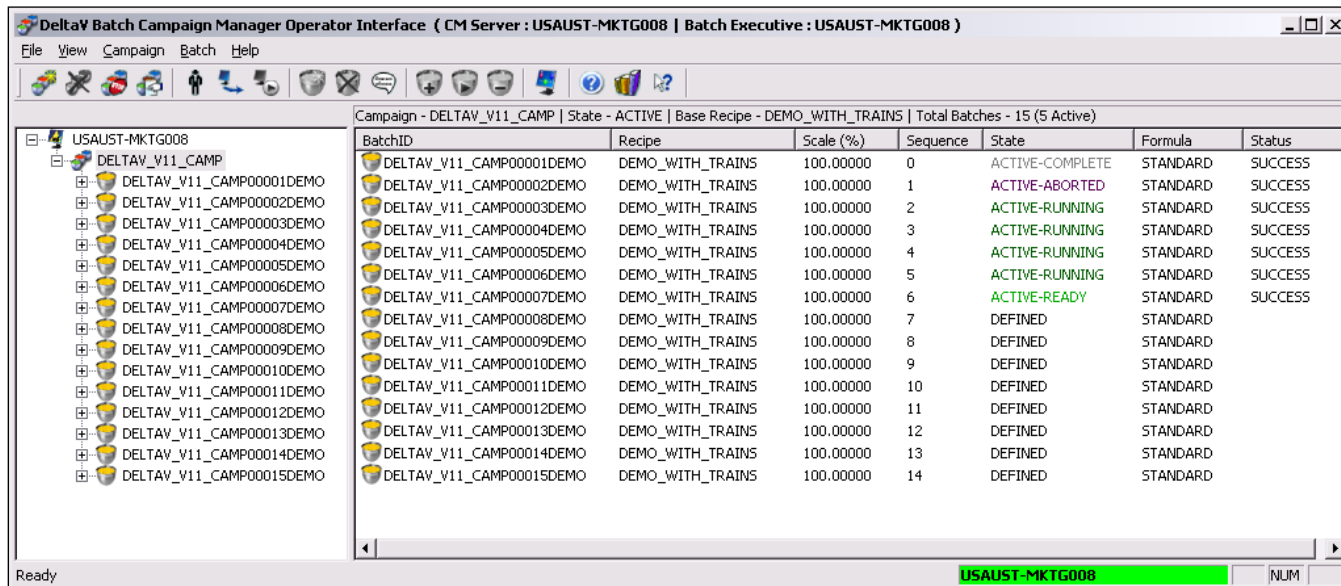


Campaign Manager



Create and manage a campaign by specifying the recipe, formula, equipment, and number of batches for the campaign.

- Defines production campaigns including optional setup and cleanup recipes
- Adjusts to changing production requirements and plant operating conditions
- Monitors campaign execution and interacts with campaigns
- Collects automated historical data collection
- Features a Service-Oriented Architecture Web Service to create, modify, and interact with campaigns
- Redundant operation

Introduction

DeltaV™ Campaign Manager is a tightly integrated component within the DeltaV Batch product suite. It provides an easy-to-use campaign creation and management interface.

The tight integration of Campaign Manager with the DeltaV Batch configuration tools and DeltaV Batch Executive allows you to define and create campaigns with minimal effort.

The campaign modification capabilities of Campaign Manager provide the flexibility required to adjust to changing production requirements and plant operating conditions.

Campaign Manager also provides a comprehensive campaign execution history. The Campaign Manager server automatically captures all information associated with the creation, modification, or execution of a campaign.



Benefits

Defines production campaigns including optional setup and cleanup recipes. The DeltaV Campaign Manager gives you the power to create and schedule campaigns for execution in less than a minute. Each campaign can define separate recipes for setup and cleanup activities.

Adjusts to changing production requirements and plant operating conditions. The DeltaV Campaign Manager provides an extensive set of campaign modification capabilities.

Monitors campaign execution and interacts with campaigns. View the recipe, formula, batch IDs, and equipment defined for any campaign. The current status of any batch is also available, as well as any modifications made to a particular batch.

Collects automated historical data. Campaign Manager automatically collects all campaign creation, modification, and execution data.

Features a Service-Oriented Architecture Web Service to create, modify, and interact with campaigns. The Campaign Manager product includes a comprehensive SOA Web Service that enables users to develop applications to interact with the Campaign Manager Executive.

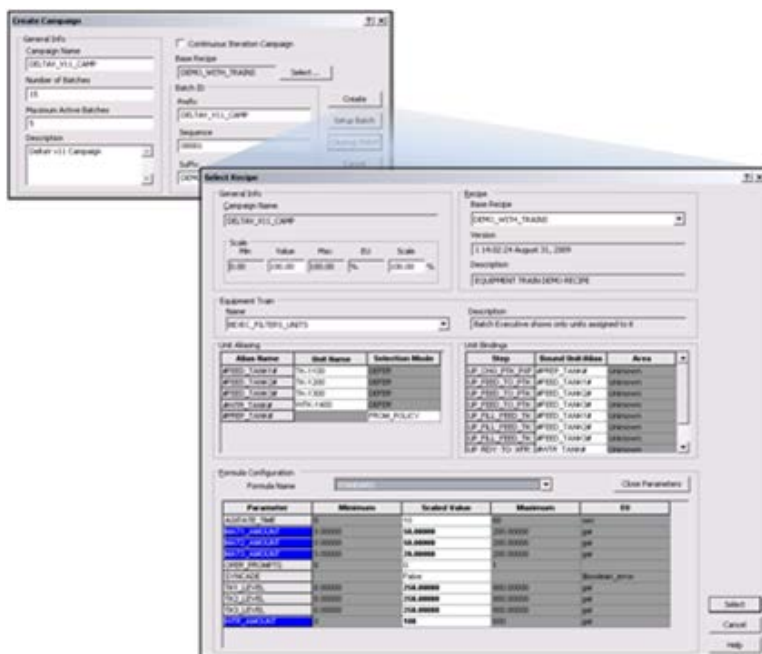
Redundant Operation. For increased availability of your batches and campaigns, and especially for coordination with operations management systems, the Campaign Manager has an *option for redundant operation*. Simply enabling the Campaign Manager on a DeltaV Application Station marked as redundant for batch ensures that the application works on each of the Application Stations in active and standby roles. Failure of the active Campaign Manager causes automatic failover to the standby Campaign Manager, ensuring seamless batch operation in your facility. Refer to the Batch Redundancy product data sheet for additional details.

Product Description

The DeltaV Campaign Manager provides the operator with the ability to create and execute campaigns. There are two primary components to the Campaign Manager:

- **Campaign Manager Executive** - controls the execution of the campaign, collection of campaign execution data.
- **Campaign Manager Operator Interface** - the interface used by the operator to create and control campaign execution. The Campaign Manager Operator Interface may be installed on any DeltaV station.

To create a campaign using Campaign Manager, the user simply provides a campaign identity, specifies the number of batches that will be executed within the campaign, and selects the recipe, formula, and equipment to be used to execute the campaign.



It's easy to create a campaign using DeltaV Campaign Manager.

The Campaign Manager supports three campaign execution modes, each of which requires a different level of operator attention to facilitate campaign execution:

- **Manual.** Each batch defined within the campaign must be manually released and placed on the Batch Executive’s batch list by the user or an external program. The user or an external program must also start each batch after it has been released.
- **Auto Release.** Each Batch defined within the campaign is automatically released and placed on the Batch Executive’s batch list. Only one batch from a campaign will be released at any time. The user or an external program must manually start the batch after it has been released.
- **Auto Start.** Each batch defined within the campaign is automatically released and placed on the Batch Executive’s batch list. A released batch is automatically started if the number of active batches within the campaign is less than the maximum number of active batches defined for the campaign.

Sometimes there is a need to run the same batch repeatedly and for an unspecified duration and number of times. Designating a campaign as a *“Continuous Iteration Campaign”* is as easy as checking a box, and takes over ensuring that batches are continually scheduled, started and executed one right after another until they system is told to stop.

Since a campaign may execute over several days or weeks, there is a chance that either production requirements or plant equipment availability will change. To facilitate rapid adjustment to these changing conditions, the DeltaV Campaign Manager provides extensive campaign modification capabilities.

These capabilities allow you to easily add additional batches to a campaign, remove batches not yet released to the Batch Executive, and make changes to the recipe, formula, or equipment specification for one or more batches defined within a campaign.

As a tightly integrated component of the DeltaV Batch Product suite, Campaign Manager utilizes the DeltaV security system. This ensures that users who initiate campaign management actions (campaign creation, execution, modification) from the Campaign Manager client have the security keys required to perform the requested action.

Historical data collection is embedded in the Campaign Manager application and requires no user configuration. The Campaign Manager Executive automatically collects and saves all campaign creation, modification, and execution data. This data is then automatically forwarded to the DeltaV Batch Historian.

Using the Campaign Manager SOA Web Service, production schedules generated by third-party software packages can be used to automatically create and execute campaigns within Campaign Manager. The Campaign Manager SOA Web Service provides all the functionality needed to create, modify, and execute campaigns using data from external programs.

System Compatibility

The Campaign Manager Service-Oriented Architecture Web Service is compatible with DeltaV v10.3 and later, when one or more Campaign Managers are enabled. The original Campaign Manager Web Service is not compatible with DeltaV v10.3 or later versions running on the Microsoft Vista, Windows 7 or Server 2008 platforms.

Ordering Information

The Campaign Manager is included in the following DeltaV Batch software suite:

Description	Model Number		
	pre-v9.3	v9.3 through v11.3	V12.3 and later
DeltaV Professional Batch*	VE2236Sxxxxx	VE2240Sxxxxx	VE2249Syyyyy

Where xxxxx is equal to the total number of batch DSTs in the system. xxxxx is available from 250 to 30,000 DSTs in 250-DST increments.

Where yyyyy is equal to the total number of class-based Unit Modules configured under Process Cells in the system. Yyyyy is available in sizes of 2 Units, 5 Units, 10 Units, 20 Units, 30 Units, 50 Units, 75 Units, 100 Units, 150 Units, 300 Units, and >300 Units.

*For additional information on the DeltaV Batch software suites, refer to the DeltaV Basic Batch, DeltaV Advanced Batch, and DeltaV Professional Batch product data sheets.

Related Products

- **Batch Executive.** The batch engine which coordinates all batch processing activity, creates detailed batch history records and schedules recipes and resources.
- **Batch Historian.** Automatically collects and stores batch recipe execution data from the DeltaV Batch Executive and process alarm and event data from the DeltaV Event Chronicle.
- **Batch Redundancy.** Enables redundant DeltaV Batch capabilities for the Batch Executive and Campaign Manager, including automatic switchover to protect your batch operations from disruptions.
- **DeltaV Operate.** High performance operator graphics, trends and alarms offered in standard operating layouts and utilizing system-wide built-in security.
- **DeltaV Operate for Batch.** Batch Controls allow you to operate your batches from the same DeltaV Operate environment used to monitor and control your process.
- **Recipe Exchange.** Provides an open, programmatic interface to the DeltaV recipe management system. Recipe Exchange is based on an XML schema that provides the ability to programmatically import and export DeltaV recipes. A Service-Oriented Architecture Web Service is also available for Recipe Exchange.
- **Batch Analytics.** Detects faults and predicts end of batch quality *in real time* using multi-variate models based on historical batch data.
- **Recipe Studio.** Powerful yet simple to use application for graphically configuring recipes (with formulas) for successful batch production.
- **Syncade™ Smart Operations Management Suite.** A new class of real-time production management software, provides an easy, flexible, integrated solution that increases plant performance by efficiently managing plant materials and equipment, coordinating production operations, improving quality operations and integrating plant information.

Prerequisites

- A DeltaV ProfessionalPLUS Station and a DeltaV Batch Executive are required in order to use the Campaign Manager.
- The DeltaV Campaign Manager must be installed on a DeltaV Application Station.
- Optimal performance is achieved by running the Campaign Manager on a separate Application Station, or on one where only the Campaign Manager and Batch Executive are enabled.

To locate a sales office near you, visit our website at:

www.EmersonProcess.com/DeltaV

Or call us at:

Asia Pacific: 65.6777.8211

Europe, Middle East: 41.41.768.6111

North America, Latin America: +1 800.833.8314 or
+1 512.832.3774

For large power, water, and wastewater applications

contact Power and Water Solutions at:

www.EmersonProcess-powerwater.com

Or call us at:

Asia Pacific: 65.6777.8211

Europe, Middle East, Africa: 48.22.630.2443

North America, Latin America: +1 412.963.4000

© Emerson Process Management 2013. All rights reserved. For Emerson Process Management trademarks and service marks, go to: <http://www.emersonprocess.com/home/news/resources/marks.pdf>.

The contents of this publication are presented for informational purposes only, and while every effort has been made to ensure their accuracy, they are not to be construed as warranties or guarantees, express or implied, regarding the products or services described herein or their use or applicability. All sales are governed by our terms and conditions, which are available on request. We reserve the right to modify or improve the design or specification of such products at any time without notice.

