

DeltaV™ Engineering Seat Software Suite



You can easily engineer your process automation system using the Engineering Seat software

- Powerful, graphical engineering capabilities
- Engineering functionality on demand
- Temporary use options for greater flexibility

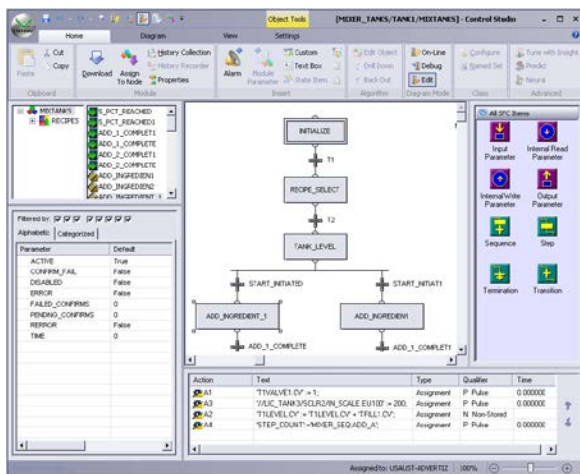
Introduction

Are you looking for engineering functionality when and where you need it in your DeltaV™ system?

The DeltaV Engineering Seat delivers state-of-the-art, dynamic engineering capabilities that can be accessed on demand from DeltaV workstations such as Operator Stations, Maintenance Stations, and Base Stations.

Pre-engineered templates, along with offline and online configuration capability ensure that you are getting the most for your investment.

Use the unique DeltaV Flexlock feature to ensure only appropriate users can gain access to engineering tools and Windows applications.



Graphical Sequential Function Chart Configuration

Benefits

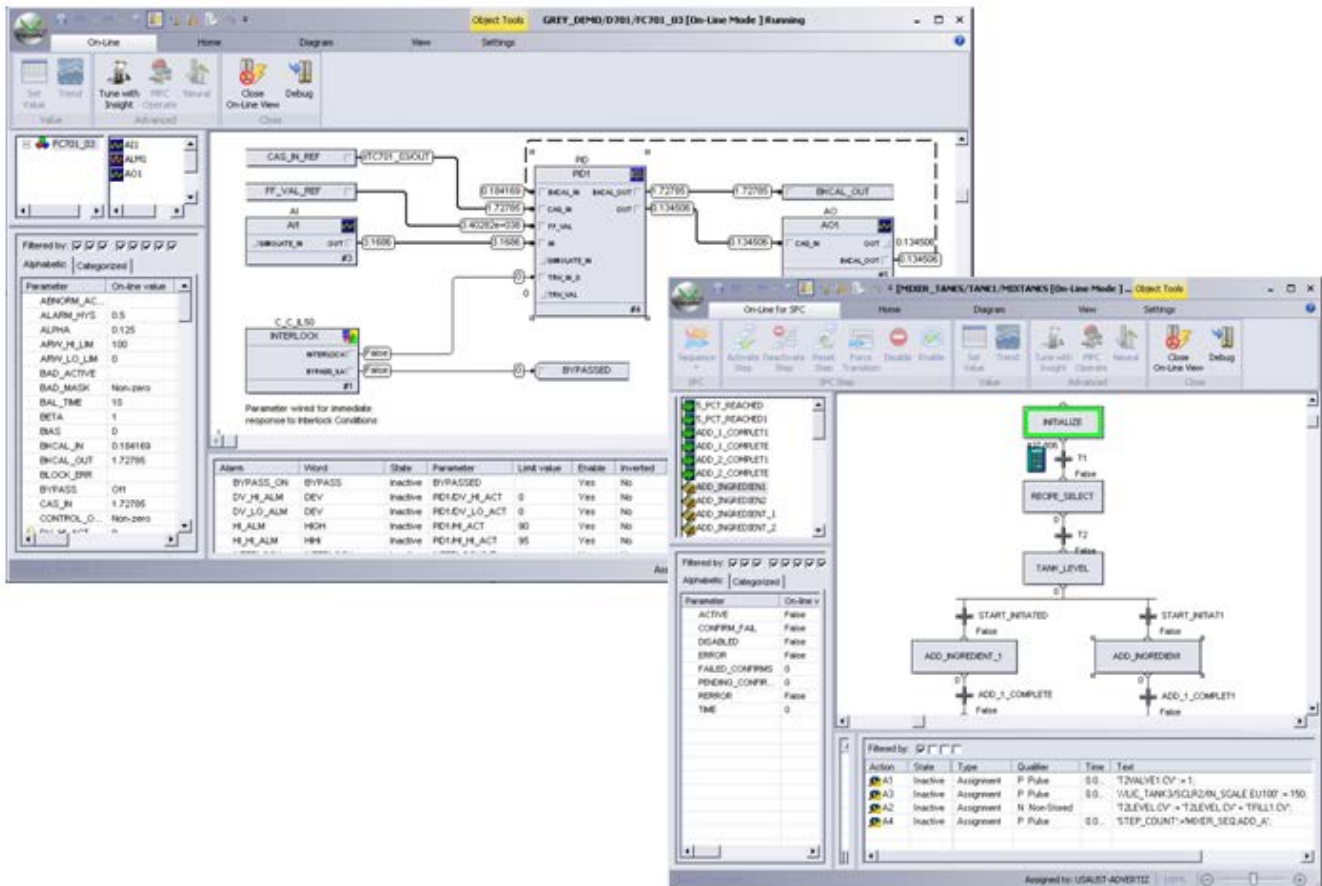
Graphical engineering capabilities. Engineer your system your way. Design your process control system in an environment similar to Microsoft Windows. Use the high-resolution graphics and drag-and-drop features for total engineering capabilities.

Implement using the pre-engineered library templates or customize them to fit your needs. Your process control system will be up and running in record time using DeltaV system engineering.

Engineering functionality on demand. DeltaV Engineering Seats can be assigned to physical DeltaV workstations (just as with Operator Station Software, Maintenance Station Software, etc.), or the functionality can be managed by the ProfessionalPLUS Station as a floating pool of engineering seats.

From existing, physical DeltaV workstations, users with appropriate security privileges can easily access DeltaV engineering tools by using an available, floating DeltaV Engineering Seat. Floating Engineering Seats allow you to accurately provide functionality that matches the number of concurrent engineering users expected on the system; there is no longer a requirement to dedicate engineering functionality to each physical workstation in the system.

Temporary use options for greater flexibility. The dynamic engineering needs of plant startups, commissioning activities, and turnarounds can be satisfied with available, temporary DeltaV Engineering Seats. No longer do you have to purchase more, permanent engineering capacity just to get through periods of peak demand. Just purchase the number of DeltaV Engineering Seats you need for the duration of time needed – no waste!



Graphically view and debug executing control strategies.

Product Description

The high-performance DeltaV Engineering Seat Software Suite was developed following the Microsoft paradigm. Features such as windows, graphics, drag-and-drop, and cut-and-paste enable you to concentrate on your control strategies—not on the application.

Whether remotely or directly connected to the DeltaV system, the DeltaV Engineering Seat Software Suite provides the same capabilities.

You can easily engineer your system at the Engineering Seat. Our multi-tasking environment runs on Microsoft Windows. Configuration is smooth, fast and completely integrated—from graphics to control to OPC to history! In record time your system will be up and running.

With the DeltaV system, there are no behind-the-scenes translation programs that convert your graphical control strategy into a different structure. This allows you to easily view and troubleshoot your strategies with the same tools used to configure. Simply select “on-line” for a control tag and view its actual execution in the same graphical representation used to edit.

No matter where the control strategy is executing - DeltaV controller, workstation or Foundation fieldbus device, you use the same configuration, on-line view and modification capabilities.

DeltaV Engineering Seat functionality is available as either a permanent or temporary (expiring) seat. Permanent seats are valid at all times, and do not expire. Temporary (expiring) seats are provided with a valid date range, specified at the time of purchase.

Permanent seat licenses may be assigned to specific DeltaV workstations or Remote Client Sessions. These are considered **fixed** (assigned) seats.

All temporary (expiring) seats and any permanent seat capacity not assigned to specific DeltaV workstations or sessions are automatically available for floating seat allocation. Permanent seats may be used for either fixed or floating allocation use. Temporary seats can only be used via floating allocation.

A **floating** Engineering Seat is used when a DeltaV engineering application (as defined in the Configuration Software Suite product data sheet), Control Studio On-Line, or Recipe Studio is started, and the demand is not satisfied by a fixed (assigned) Engineering Seat or other functionality currently available on the workstation/session.

Engineering Seats, whether permanent or temporary, fixed or floating, have no Operations Span of Control. Operations Span of Control must be provided by the existing functionality on the physical workstation where the Engineering Seat functionality is used.

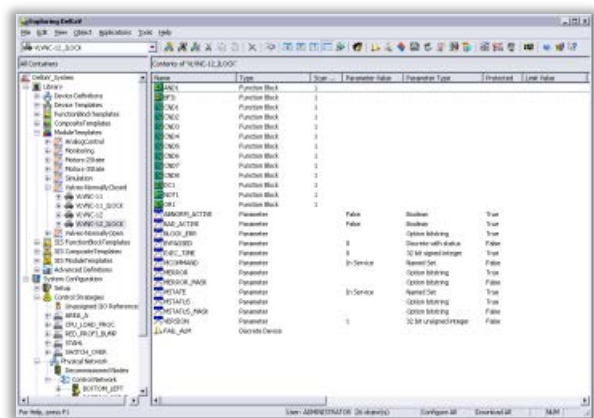
The ProfessionalPLUS workstation serves as the floating Engineering Seat manager; responding to requests for floating engineering seats from other DeltaV workstations.

A Floating License Manager Application provides the status of all types of DeltaV Engineering Seats that have been purchased for the system; including the capacity of floating seats, number of seats available vs. those in-use, and more detailed information about in-use seats.

While the DeltaV Engineering Seat functionality is additive to the fixed (assigned) functionality already present on each DeltaV workstation (e.g. DeltaV Operator Station), individual users can have specific privileges that determine which applications they are allowed to launch (e.g. if they are allowed to create a demand for a DeltaV Engineering Seat), functions they are allowed to perform, and which parameters they are allowed to change. These user privileges can be defined for all or part of your DeltaV system with DeltaV User Manager, enabling the privileges to be tailored to certain job roles and plant areas.

When utilizing the DeltaV Engineering Seat functionality on DeltaV Operator Stations, use the DeltaV exclusive Flexlock to ensure that operators remain dedicated to monitoring, troubleshooting, and maintaining the process according to plant operating philosophies.

Emerson Process Management is the industry leader in scalable, plant-aware process automation systems. Our state-of-the-art, totally integrated applications give you the power to do more.



DeltaV Explorer facilitates easy navigation and provides an intuitive view of your entire system

The following software applications are included with the DeltaV Engineering Seat Software Suite.

For detailed information about the following applications, refer to the appropriate product data sheet:

- **Configuration Software Suite.** Makes it easy to create Control Strategies and System Graphics to get your plant up and running quickly and efficiently.
- **Control Studio On-line.** Graphically monitor and troubleshoot running control strategies.

Products included with appropriate system licenses

When the appropriate system licenses are included in your DeltaV system, the following applications are provided:

- **Recipe Studio.** Powerful yet simple to use application for graphically configuring recipes (with formulas) for successful batch production.

Ordering Information

Description	Model Number
Engineering Seat (Permanent)*	VE2165
Engineering Seat (Temporary), 60 days*	VE2165D60
Engineering Seat (Temporary), 90 days*	VE2165D90
Engineering Seat (Temporary), 180 days*	VE2165D180

*Engineering Seats have no Operations Span of Control. Operations Span of Control, if existing, must be provided by the functionality licensed (i.e. VE2104 - Operator Station, Full Span of Control) on the physical workstation where the Engineering Seat functionality is used.

Related Products

Related Software Products

- **Application Station Software Suite.** Integrate DeltaV with 3rd party systems and applications on a DeltaV workstation. Includes a scalable DeltaV Continuous Historian and DeltaV OPC Data Access server.
- **Base Station.** Centralized DeltaV applications, where the combination of applications included are user selected on a DeltaV workstation.
- **DeltaV Remote Access Service.** Enables communications to a remote DeltaV workstation.
- **DeltaV Remote Client.** Remotely connect to your DeltaV system using thin-client technology.
- **DeltaV Web Server.** Enables web-based viewing of operator displays and historical data.
- **Maintenance Station Software Suite.** Centralized system and device maintenance, including device calibration, device and hardware alerts and diagnostics on a DeltaV workstation

- **Operator Station Software Suite.** Centralized operations and diagnostics on a DeltaV workstation
- **ProfessionalPLUS Station Software Suite.** Centralized operations, engineering, configuration database and diagnostics on a DeltaV workstation

Related Hardware Products

- **DeltaV Workstation Hardware.** Select from a variety of PC and server hardware, tested and preloaded with DeltaV software.
- **Touchscreen.** Allows displays to interact directly to operators' touch.

Prerequisites

- DeltaV Engineering Seat licenses are compatible with DeltaV v12.3 software or later.
- Use of AMS Device Manager functionality with the DeltaV Engineering Seat requires a permanent seat fixed (assigned) to the workstation where AMS Device Manager functions are to be performed.

To locate a sales office near you, visit our website at:

www.EmersonProcess.com/DeltaV

Or call us at:

Asia Pacific: 65.6777.8211

Europe, Middle East: 41.41.768.6111

North America, Latin America: +1 800.833.8314 or
+1 512.832.3774

© 2013 Emerson Process Management. All rights reserved. For Emerson Process Management trademarks and service marks, go to: <http://www.emersonprocess.com/home/news/resources/marks.pdf>.

The contents of this publication are presented for informational purposes only, and while every effort has been made to ensure their accuracy, they are not to be construed as warranties or guarantees, express or implied, regarding the products or services described herein or their use or applicability. All sales are governed by our terms and conditions, which are available on request. We reserve the right to modify or improve the design or specification of such products at any time without notice.

